

Digital Dental X-ray

Midmark Animal
Health Products



Disease you can't see...

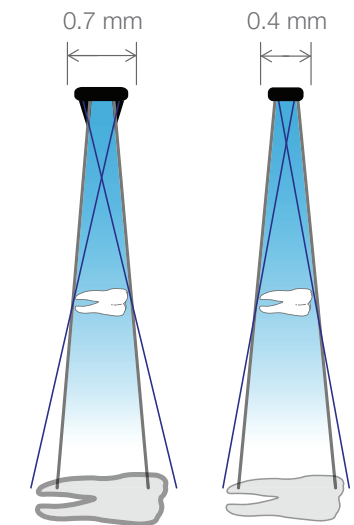
60% of periodontal disease lies below the gum line, and many issues aren't detectable via probing or visual inspection.*

Don't let patients leave your clinic with undiagnosed disease. Only through the use of dental radiographs can you effectively diagnose dental disease that could result in tooth loss and many systemic diseases affecting the heart, liver and kidneys.



VetPro® Digital Dental X-ray Systems from Midmark are a better solution for your dental X-ray needs:

- Intuitive, with easy-to-use, veterinary-specific software and control panel
- DC technology allows you to adjust kV (60, 65 and 70) and mA (4, 5, 6 and 7)
- A flexible system with settings you can customize to suit your practice
- 0.4 mm focal spot (smallest in the industry) is designed to produce visibly higher resolution images
- Superior construction – made in the U.S.A.
- Before, during and after sale support



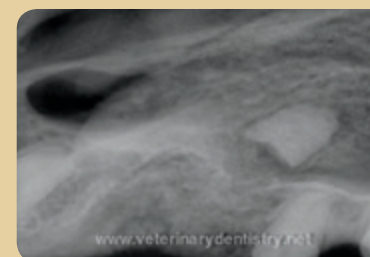
The VetPro® DC 0.4 mm focal spot is designed to produce visibly higher resolution images whether you're using film or digital sensors. Details are sharper and more defined. Small but important differences are easier to spot. Pathologies are easier to identify.



Teeth appear normal and healthy.



X-ray shows underlying pathology.



Post-extraction images allow you to spot remaining tooth fragments.

You can't afford not to invest in dental X-ray. VetPro® systems can pay for themselves in less than a year! Let us show you how.

* PetMD, Gum Disease in Dogs, www.petmd.com/dog/conditions/mouth/c_multi_peridontal_disease

Designed to provide exceptional digital images.

The smallest possible focal spot and adjustable mA, kV and time settings give you the perfect solution for today's digital imaging environment.

VetPro® DC

Designed to enhance your clinic's efficiency

Simple icons and a large, easy-to-read display for ease of use. You can select the mA, kV and time settings of your choice, or choose the convenient pre-programmed technique settings.

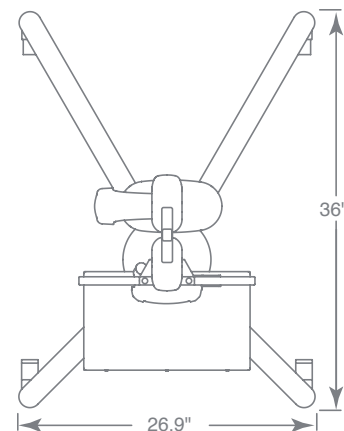
Unprecedented quality and stability

The positioning arm is constructed with high-tolerance, frictionless joints and a heavy duty dual braking system designed for precise and stable placement. The unique tube head handle is designed to let you effortlessly put the X-ray source where you want it, with just one hand. VetPro® DC is available with a 56", 66", 76" or 82" arm length or as a versatile mobile system.



VetPro® DC Mobile

- Only 26.9" wide to allow for mobility through standard doorways
- 3.5" heavy duty wheels, two with brake locks
- Base can be rotated 360 degrees for easy repositioning
- UL tested and approved
- Exceptional stability



Mobile
Base: 26.9" w x 36" l
(68.3 cm x 91.4 cm)
Height: 79.9" (195.3 cm)
Arm reach: 56" (142.2 cm)

VetPro® Complete Digital Dental Radiography System

The first integrated veterinary dental X-ray and digital sensor system.

Combine the VetPro® DC with a VetPro® DR Digital Sensor System for an unmatched synergy of technology and efficiency. DR sensors are designed to utilize 16-bit image processing and 4,096 levels of grey to deliver detailed diagnostic images in less than 5 seconds.

- Constructed with a convenient sensor holder on arm
- USB 2.0 plug-and-play connectivity
- 0.4 mm focal spot, adjustable kV, adjustable mA, time to 20 ms
- No messy cables or countertop boxes
- 56", 66", 76" or 82" arm lengths and versatile mobile system



VetPro® Complete Mobile Imaging Station

A digital imaging solution that includes a VetPro® Complete Mobile unit with #2 sensor, laptop pre-loaded with imaging software and laptop tray.



VetPro® DR sensor for digital dental imaging.

Designed to allow for quick capture of clean, clear digital images for diagnosis and client education.

With a VetPro® DR sensor you can get the soft-tissue visualization plus crown and root definition you need to provide your patients with superior dental care.

- Cable is Kevlar® reinforced for durability
- Waterproof, hermetic seal reduces problems encountered during routine cleaning
- CMOS technology designed to deliver enhanced image quality
- High speed USB connection captures images 37% faster
- Rounded corners means easier positioning in tight spaces for better capture of roots
- Ask us about our Sensor SafeSM Extended Care and Factory Warranty Extension programs

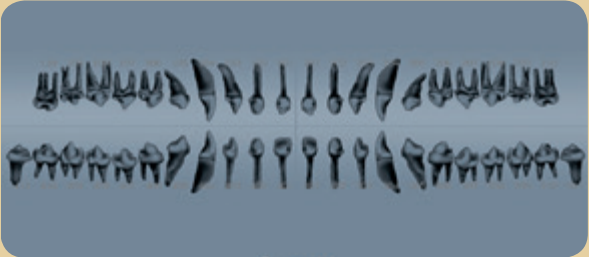
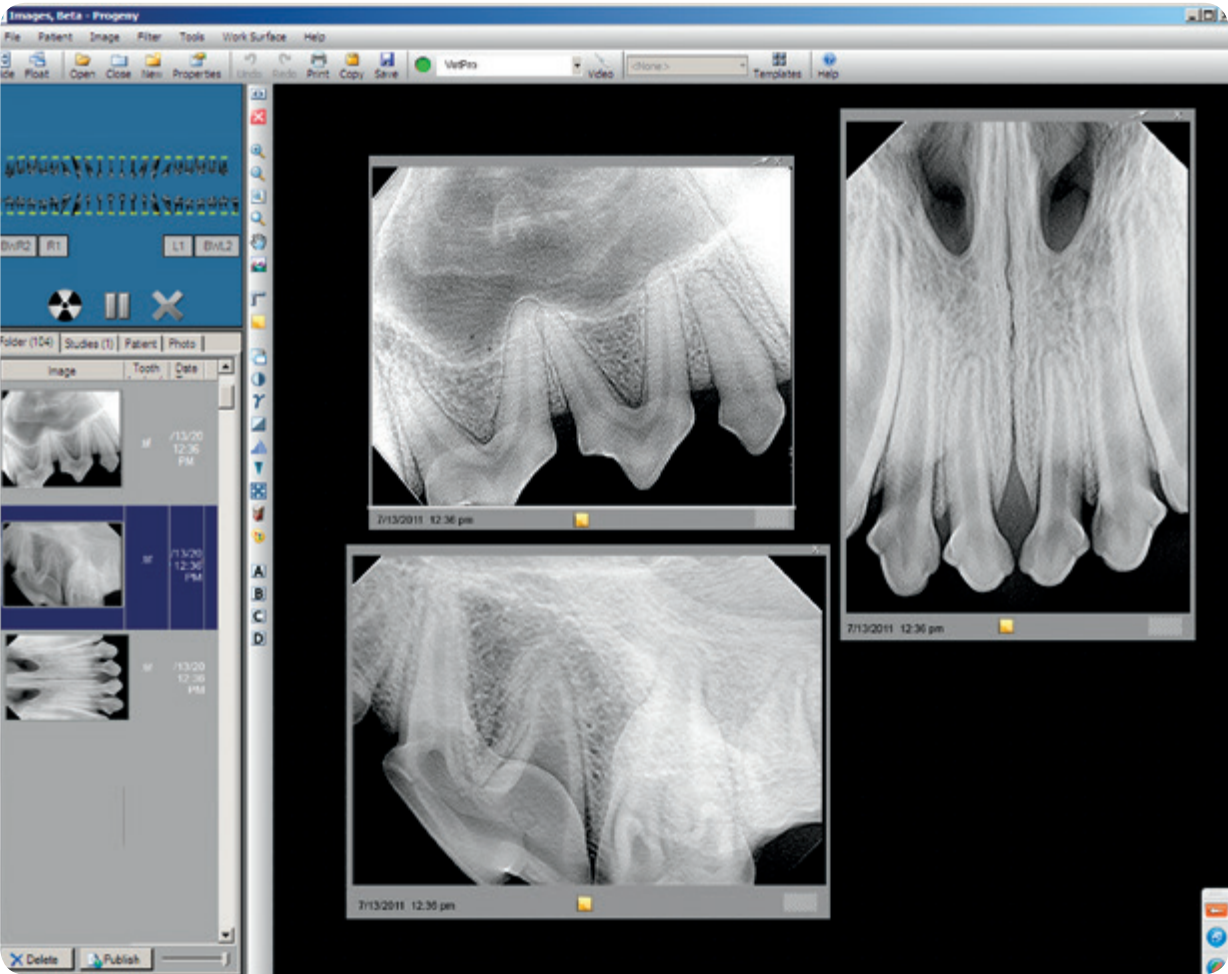


No-hassle installation: VetPro® DR is designed using USB technology. Simply connect the USB cable to your PC, use the quick calibration flash drive to prepare your sensor, and the system is ready to take quality, diagnostic, digital images.

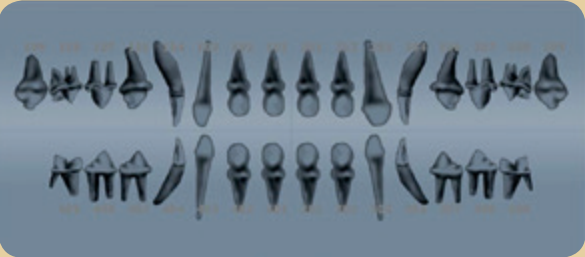
Imaging Software

Use your VetPro® DR System with our custom imaging software. It's been designed with a look and formatting that's familiar and easy to learn so you'll be acquiring, enhancing and storing images in no time.

Integrated with AVImark® Veterinary Practice Management Software



Canine Tooth Panel



Feline Tooth Panel

VetPro® DC Specifications

Line voltage: 120-230 VAC
+/- 10% 50-60 Hz

Line load: maximum current
amps

Tube potential: 60, 65 or 70 kV

Tube current: 4, 5, 6 or 7 mA

Exposure time: 20 ms to 2
seconds

Cone length: 20 cm (8 inches)

Minimum inherent filtration:
2 mm Al equivalent at 70 kV

Focal spot: 0.4 mm (IEC 336)

Duty factor: 1:15

Remote exposure hand switch
included

Shipping weight:
95 lb (wall mount)
330 lb (mobile)

Applicable documents federal
regulations: 21 CFR, UL, CE

Warranty: 2 years, limited

Options: choice of 56", 66", 76"
or 82" (total reach); double stud
mounting plate

VetPro® DR Sensors Specifications

Dimensions:

Size 1 (film size equivalent)
37 mm x 24 mm x 6 mm

Size 2 (film size equivalent)
43 mm x 30 mm x 6 mm

Active Area:

Size 1 (film size equivalent)
30 mm x 20 mm

Size 2 (film size equivalent)
36 mm x 26 mm

Number of Pixels:

Size 1 (film size equivalent)
1580 lines x 1050 pixels

Size 2 (film size equivalent)
1896 lines x 1368 pixels

Pixel Size: 19 µm x 19 µm

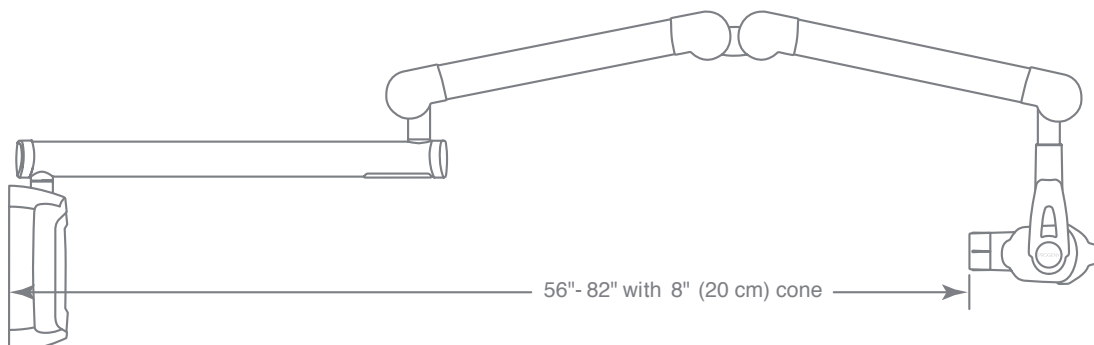
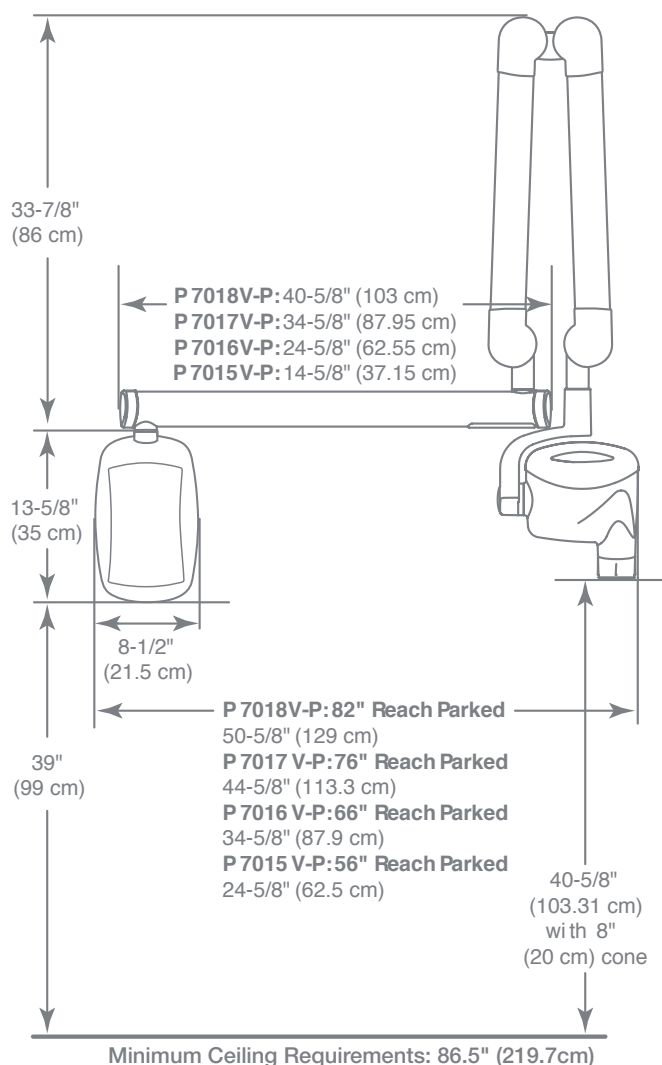
Theoretical Resolution:
26 lp/mm

Levels of Grey: 4096

Connection Type:
High speed USB 2.0

Sensor Cable Length: 3 meters

Warranty: 2 years



Authorized
Representative:

CEpartner4U
Esdoornlaan 13
3951DB Maarn
The Netherlands
www.cepartner4u.eu



Find us on
Facebook

facebook.com/MidmarkAnimalHealth

midmarkanimalhealth.com

Midmark is an ISO 13485 Certified Company. • 675 Heathrow Drive, Lincolnshire, IL 60069 • 1-800-MIDMARK • 1-937-526-3662
© 2011 Midmark Corporation • Products subject to improvement changes without notice • Litho in U.S.A. • 007-0899-00 Rev. E1 (10/14)

